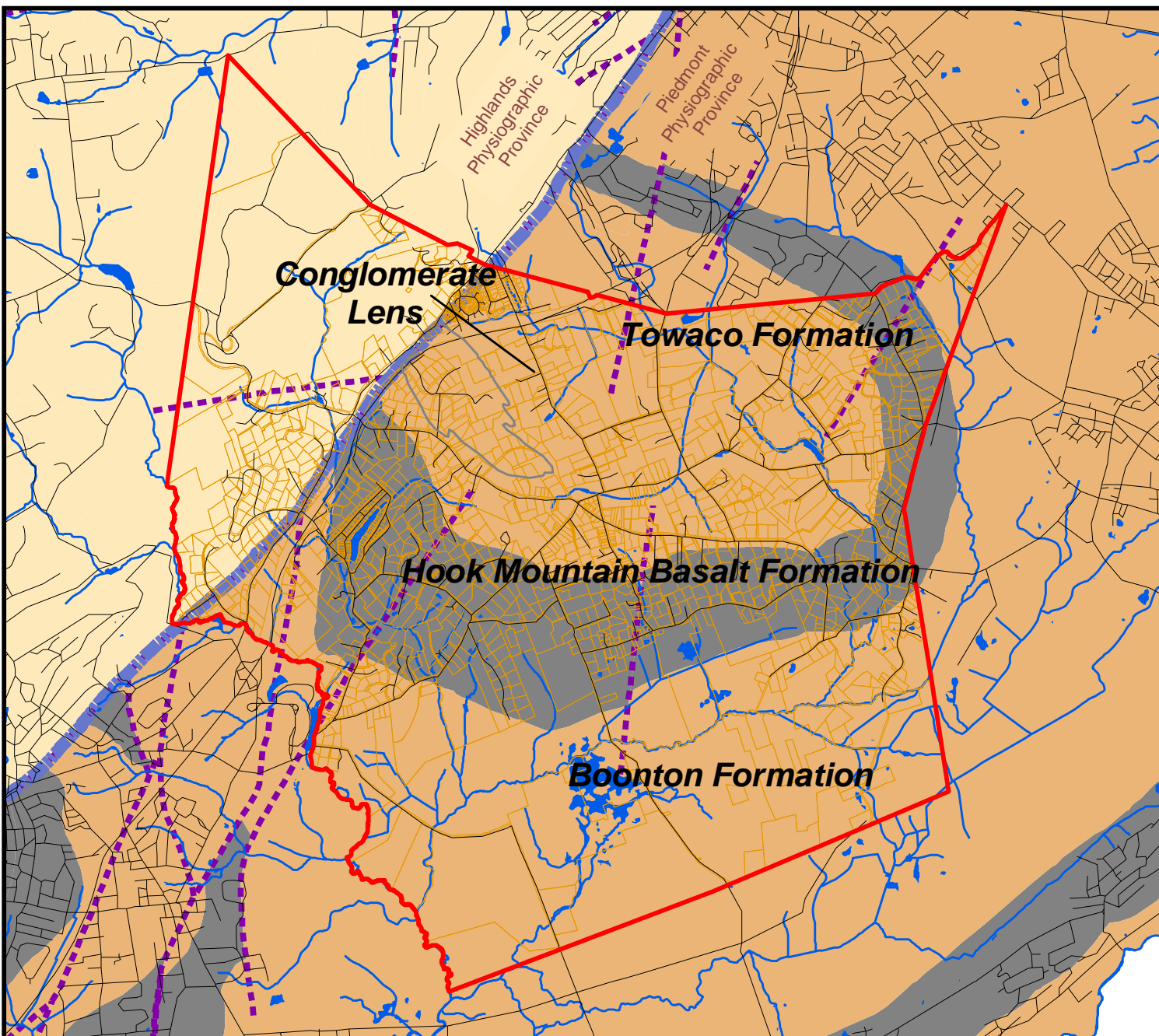


Figure 1 Bedrock Geology



Legend

- Geologic Fault
- Pre-Cambrian Crystalline Rock
- Jurassic / Triassic Sedimentary Rock
- Jurassic Basalt
- Physiographic Provinces
- Municipal Boundary
- Parcels
- Roads
- Water



This map was developed using geographic information system digital data developed under the auspices of the Department of Environmental Protection Geographic Information System including NJDEP data as well as data developed by Morris County Department of Planning and Development and Harding Township Environmental Commission. This secondary product has not been verified by NJDEP, MCDPD, or HTEC.

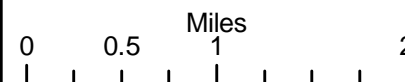


Figure 2 Ground Water Recharge

Legend

Groundwater Recharge (in/yr)

15.37 - 22.74

11.53 - 15.36

7.69 - 11.52

0.01 - 7.68

GSR-32 Does Not Apply

Municipal Boundary

Parcels

Roads

Water

GSR-32 is the NJGS method for evaluating ground water recharge.



This map was developed using geographic information system digital data developed under the auspices of the Department of Environmental Protection Geographic Information System including NJDEP data as well as data developed by Morris County Department of Planning and Development and Harding Township Environmental Commission. This secondary product has not been verified by NJDEP, MCDPD, or HTEC.

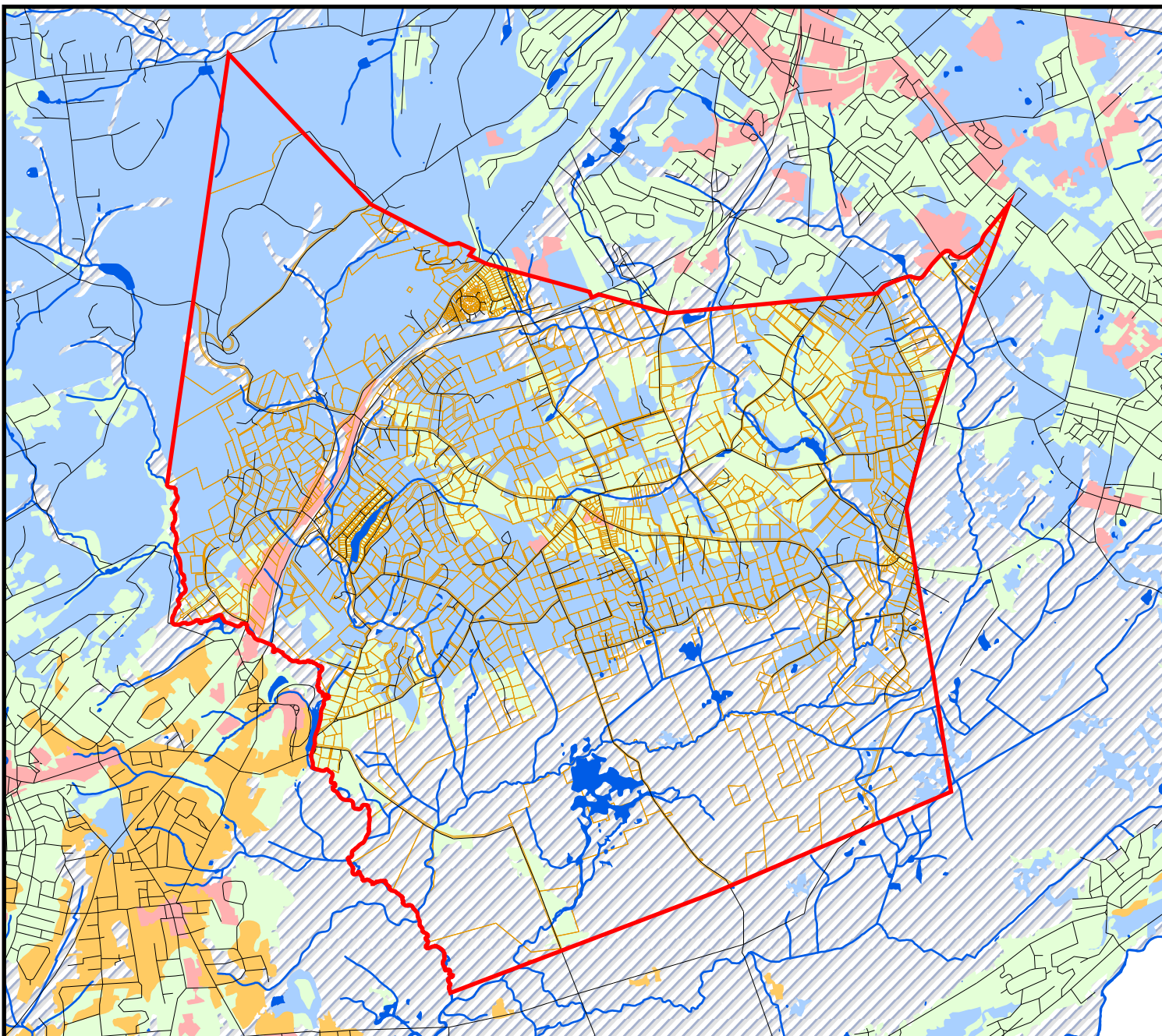
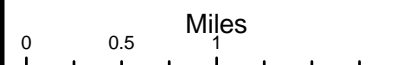


Figure 3 Glacial Deposits

Legend

Glacial Deposits

Wisconsinan Age

- Deltaic & Lacustrine Fan Deposits
- Morainic Deposits
- Lake Bottom Deposits
- Continuous Till

Jerseyan Age

- Fluvial & Deltaic Deposits
- Till
- Municipal Boundary

Parcels

Roads

Water



This map was developed using geographic information system digital data developed under the auspices of the Department of Environmental Protection Geographic Information System including NJDEP data as well as data developed by Morris County Department of Planning and Development and Harding Township Environmental Commission. This secondary product has not been verified by NJDEP, MCDPD, or HTEC.

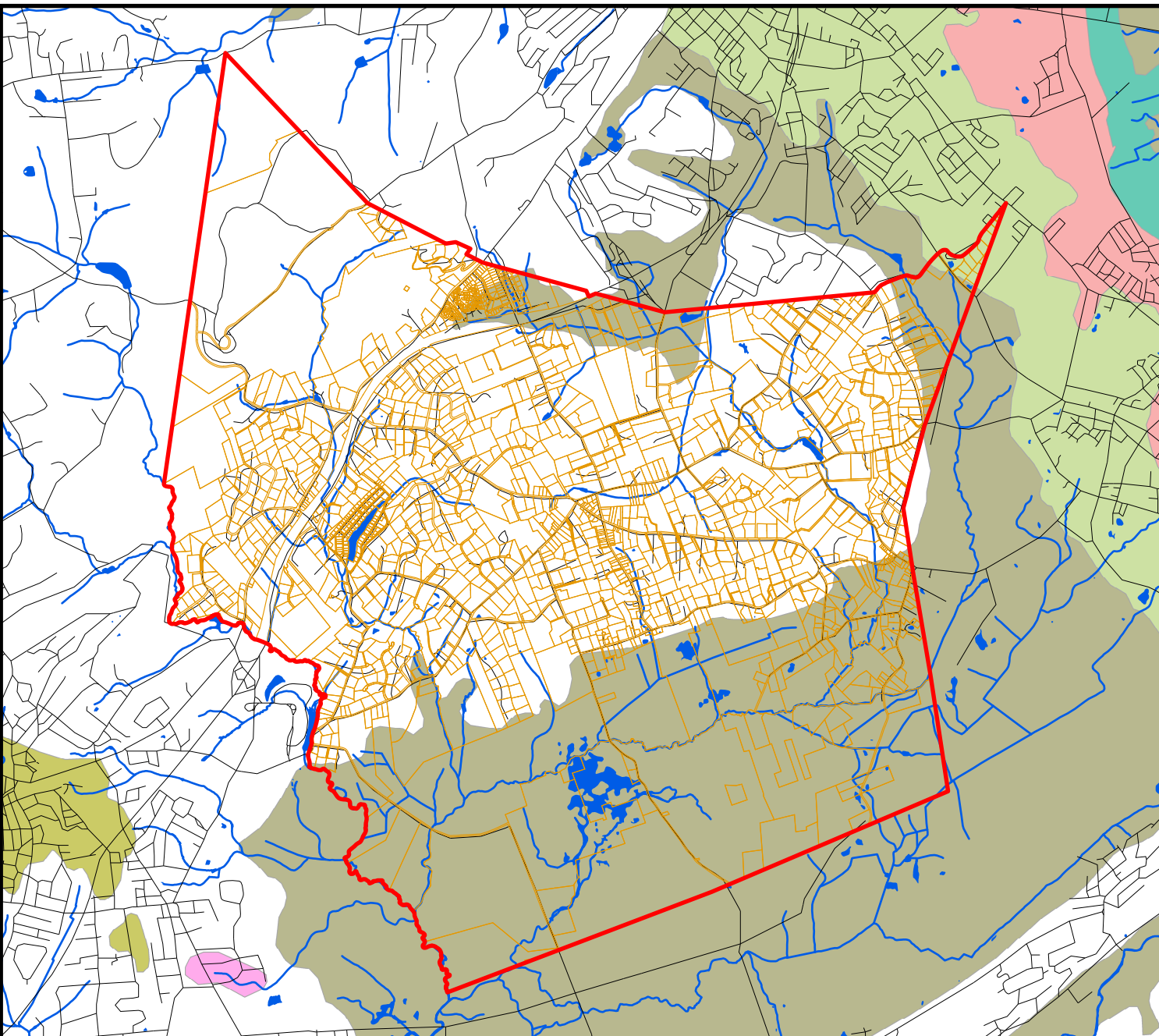
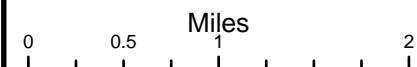


Figure 4 Buried Valley Sole-source Aquifer

Legend

Glacial Deposit Classification

- Sand and Gravel
- Morainic Deposits
- Till
- Lake-bottom Sediment
- Surficial sediment of the Coastal Plain
- Other
- Counties
- Buried Valley SSA
- Harding Township

Harding Township is said to be in the Recharge Area for this Aquifer. See text for additional explanation.



This map was developed using geographic information system digital data developed under the auspices of the Department of Environmental Protection Geographic Information System including NJDEP data as well as data developed by Morris County Department of Planning and Development and Harding Township Environmental Commission. This secondary product has not been verified by NJDEP, MCDPD, or HTEC.

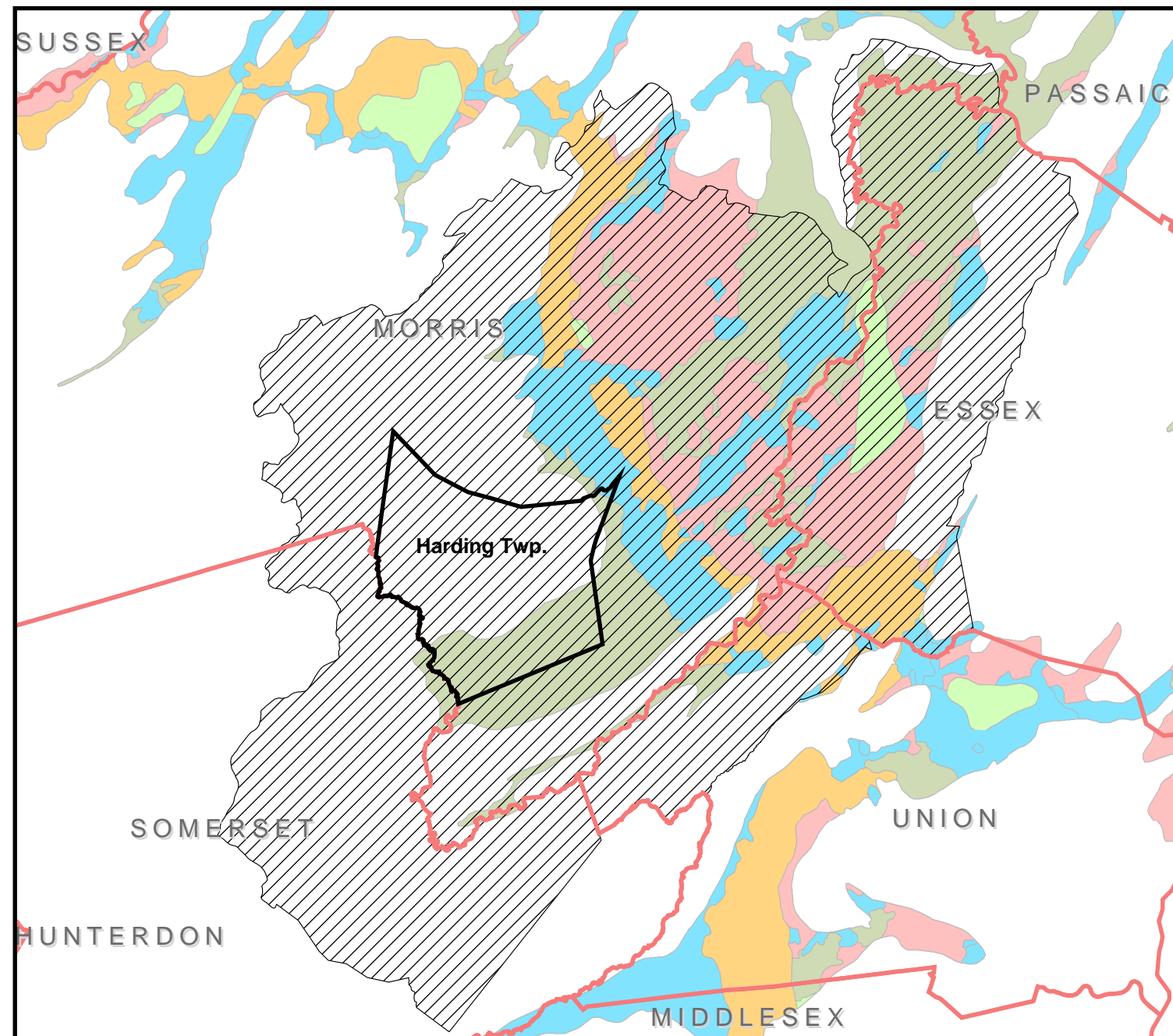
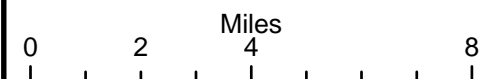


Figure 5 Topography

- Legend**
- Municipal Boundary
 - Parcels
 - Roads
 - Water

Data is from scans of the U.S. Geological Survey 7-1/2' topographic quadrangle maps. The contour interval is 20 feet.



This map was developed using geographic information system digital data developed under the auspices of the Department of Environmental Protection Geographic Information System including NJDEP data as well as data developed by Morris County Department of Planning and Development and Harding Township Environmental Commission. This secondary product has not been verified by NJDEP, MCDPD, or HTEC.

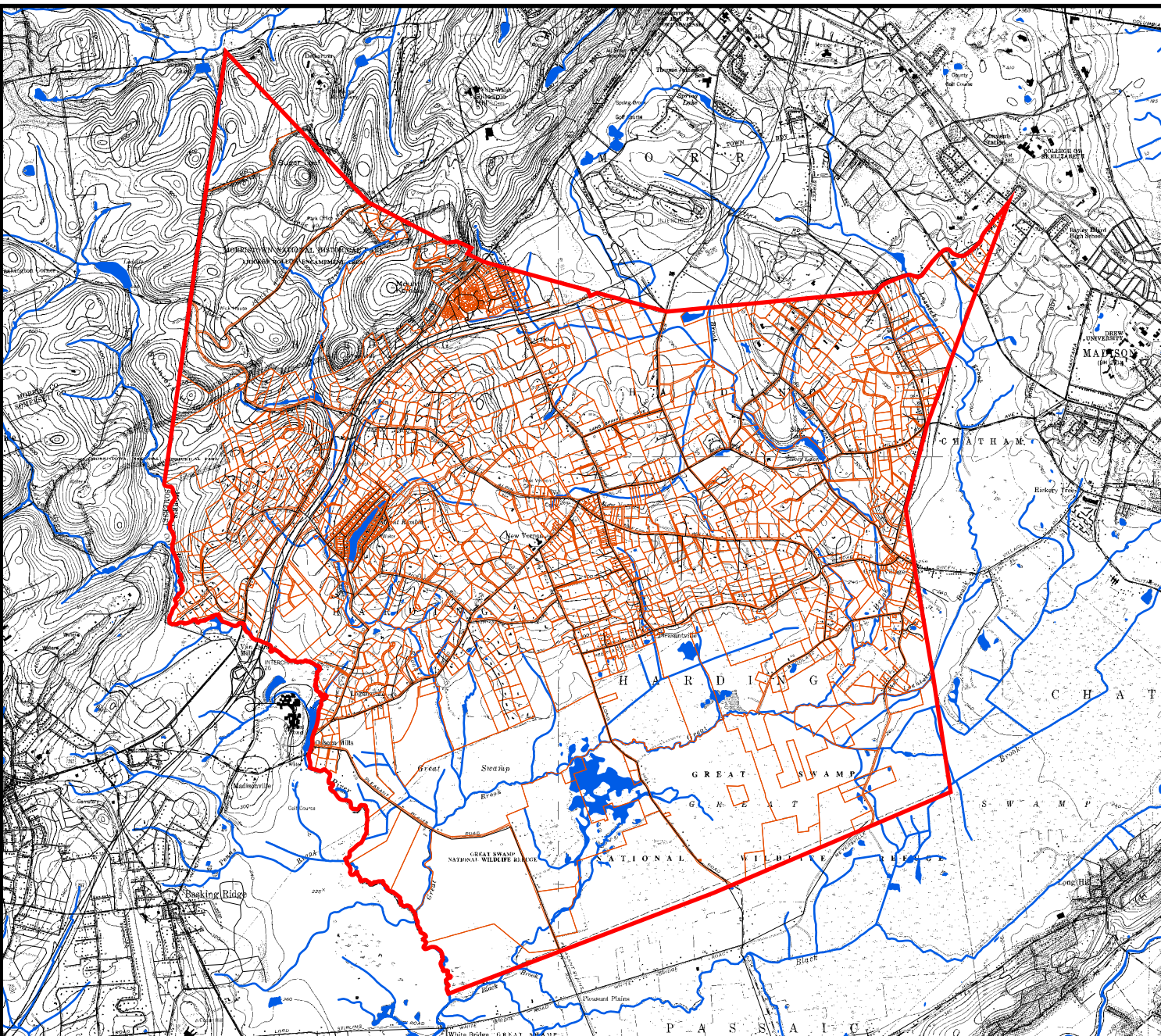
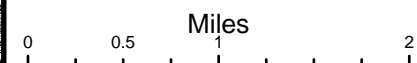


Figure 6 Soil Limitations for Septic Systems

- Legend**
- Septic Limitation**
- Severe
 - Moderate
 - Slight
 - "Disturbed"
 - Municipal Boundary
 - Parcels
 - Roads
 - Water



This map was developed using geographic information system digital data developed under the auspices of the Department of Environmental Protection Geographic Information System including NJDEP data as well as data developed by Morris County Department of Planning and Development and Harding Township Environmental Commission. This secondary product has not been verified by NJDEP, MCDPD, or HTEC.

0 0.45 0.9 1.8
Miles

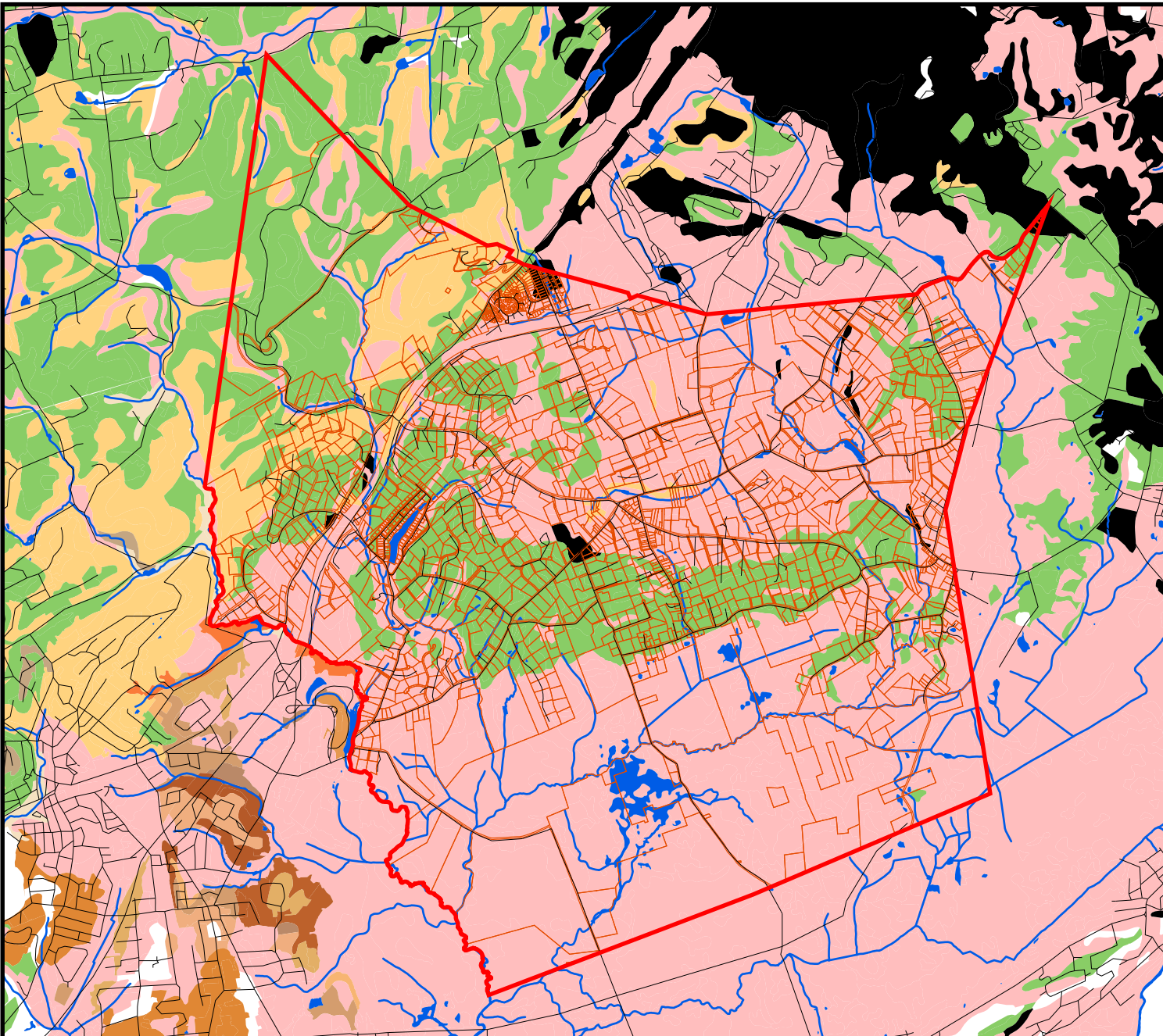


Figure 7 Wetlands

Legend

Wetlands

- Open Water
- Low Vegetation Wetlands
- Disturbed or Modified Wetlands
- Wooded Wetlands
- Uplands
- Municipal Boundary
- Parcels
- Roads
- Water



This map was developed using geographic information system digital data developed under the auspices of the Department of Environmental Protection Geographic Information System including NJDEP data as well as data developed by Morris County Department of Planning and Development and Harding Township Environmental Commission. This secondary product has not been verified by NJDEP, MCDPD, or HTEC.

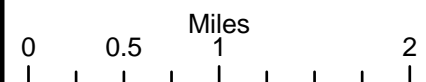


Figure 8 Drainage Basins

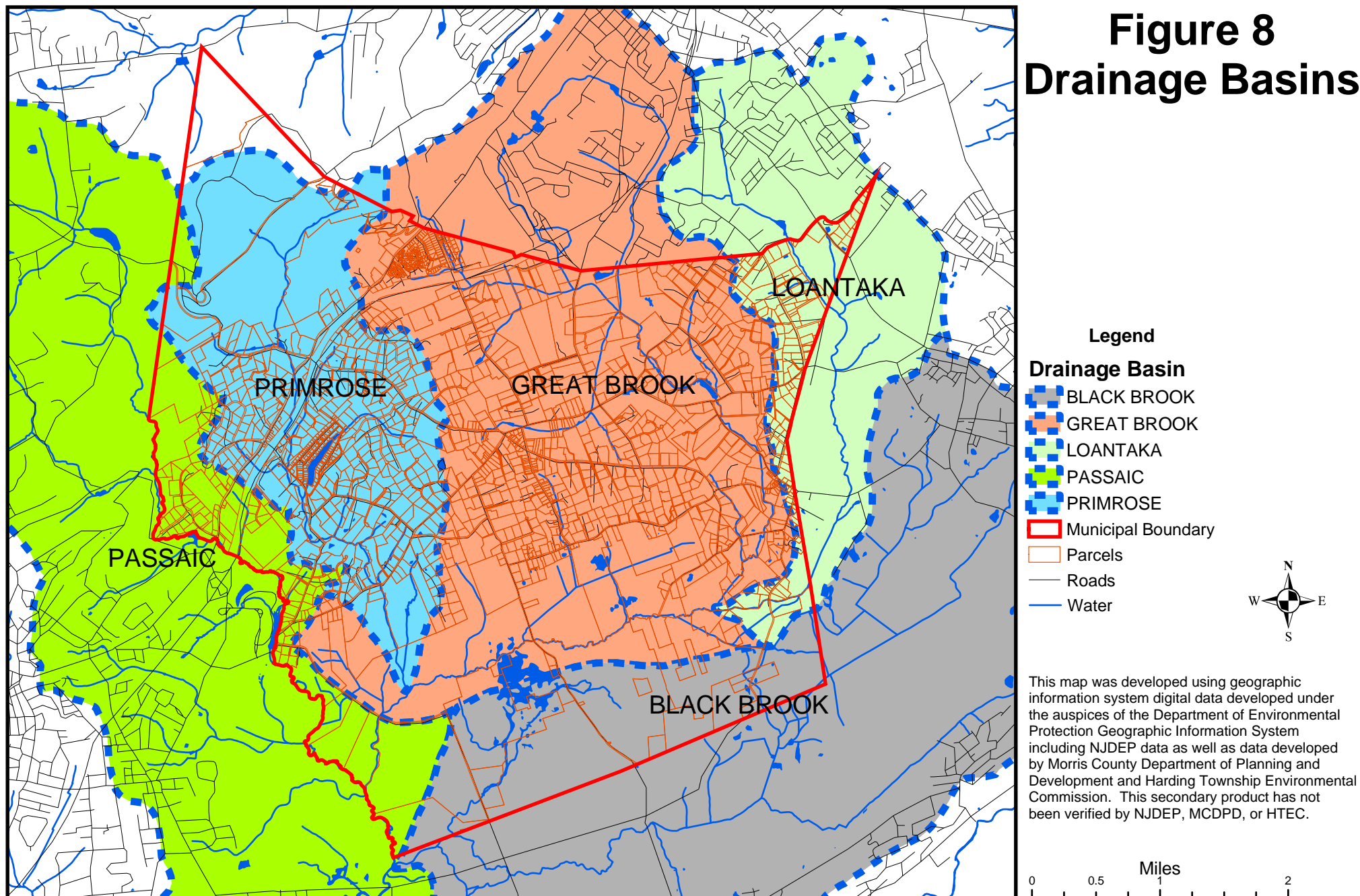


Figure 9 Flood-prone Areas

Legend

Flood Class

- 100-Year Flood
- 500-Year Flood
- Municipal Boundary
- Parcels
- Roads
- Water

Flood data from FEMA Digital Data
distribution dated September, 1996



This map was developed using geographic information system digital data developed under the auspices of the Department of Environmental Protection Geographic Information System including NJDEP data as well as data developed by Morris County Department of Planning and Development and Harding Township Environmental Commission. This secondary product has not been verified by NJDEP, MCDPD, or HTEC.

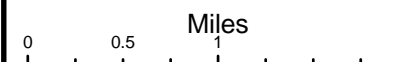


Figure 10 Vegetative Cover

Legend

Vegetation Classification

- Built-Up
- Suburban Wooded
- Forest
- Grassland
- Wetland Forest
- Emergent
- ▭ Municipal Boundary
- ▭ Parcels
- Roads
- Water



This map was developed using geographic information system digital data developed under the auspices of the Department of Environmental Protection Geographic Information System including NJDEP data as well as data developed by Morris County Department of Planning and Development and Harding Township Environmental Commission. This secondary product has not been verified by NJDEP, MCDPD, or HTEC.

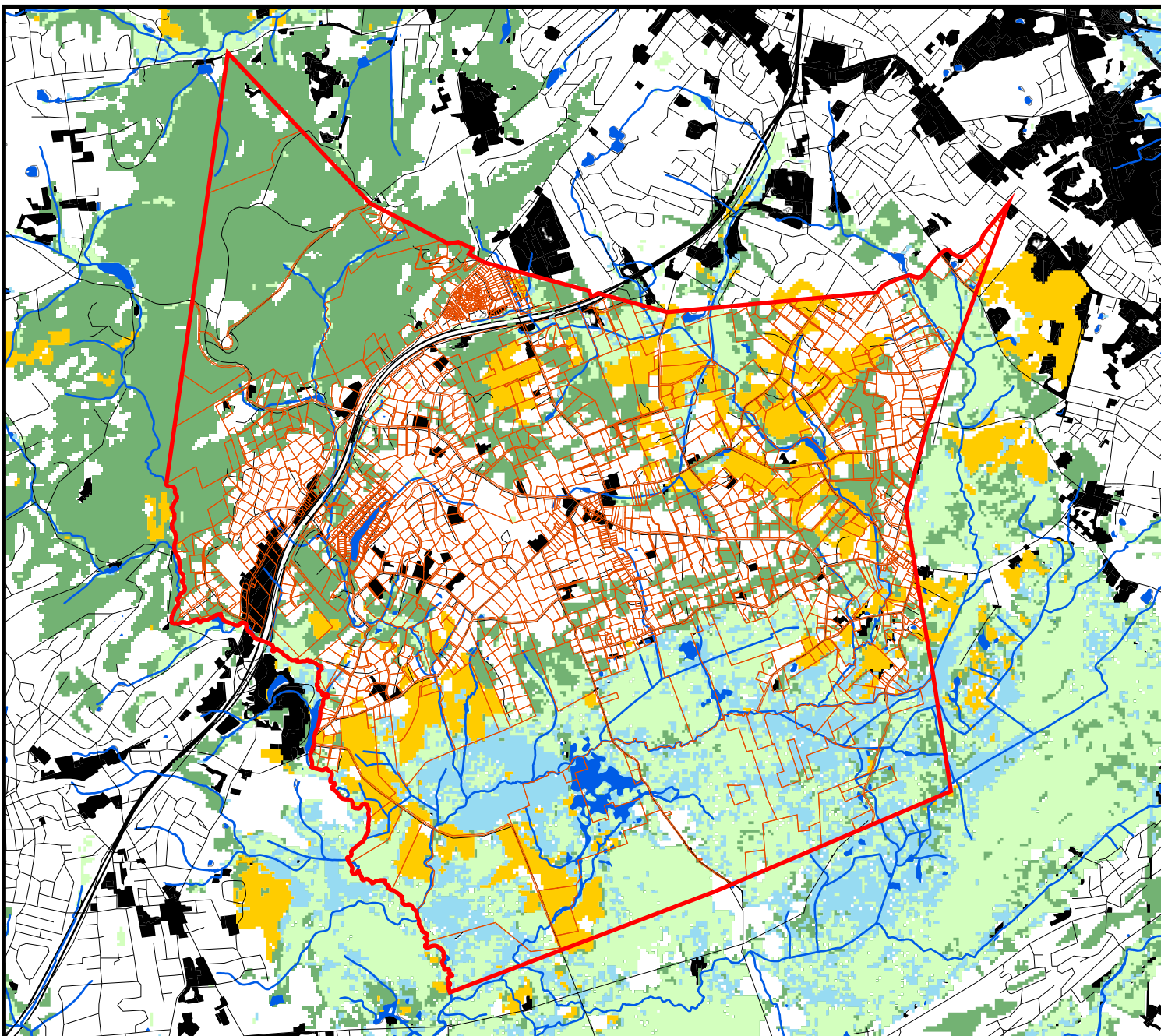
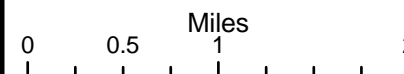


Figure 11 Critical Habitats

Legend

RANK

- Federal T & E
- State Endangered
- State Threatened
- Special Concern
- Suitable Habitat
- Municipal Boundary
- Parcels
- Roads
- Water



This map was developed using geographic information system digital data developed under the auspices of the Department of Environmental Protection Geographic Information System including NJDEP data as well as data developed by Morris County Department of Planning and Development and Harding Township Environmental Commission. This secondary product has not been verified by NJDEP, MCDPD, or HTEC.

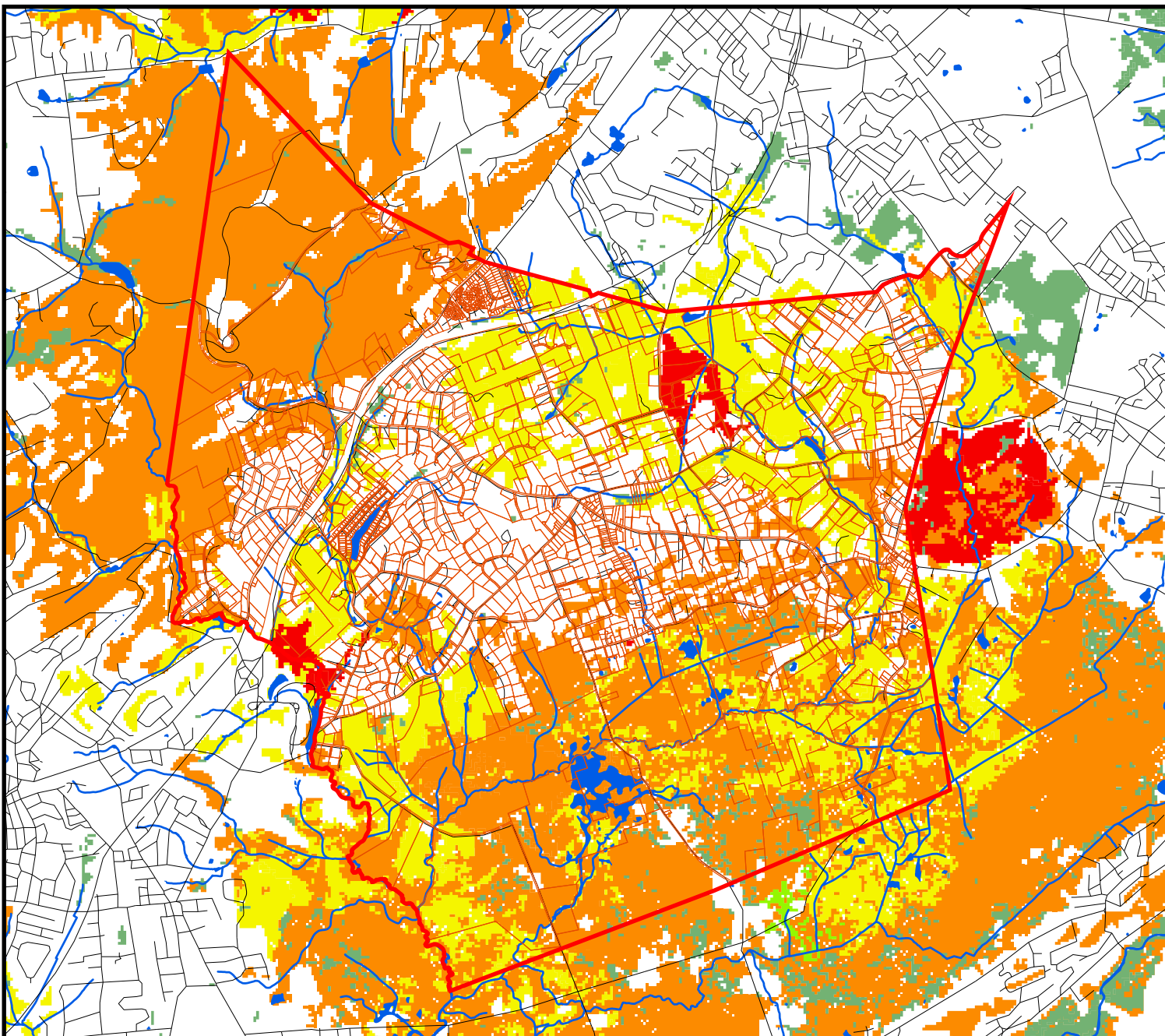
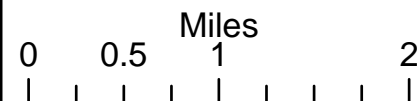









Figure 12 Stream Classifications

Harding Township Master Plan
September 2004

Legend

Stream Classification

-  Category one: Trout Production
-  Category one: Nontrout
-  Trout Production
-  Nontrout
-  Municipal Boundary
-  Parcels
-  Roads

Stream Classification data from 2003
Surface Water Quality Standards
of New Jersey, from DEP, Division of
Land Use Management, Bureau of
Freshwater & Biological Monitoring

This map was developed using geographic information system digital data developed under the auspices of the Department of Environmental Protection Geographic Information System including NJDEP data as well as data developed by Morris County Department of Planning and Development and Harding Township Environmental Commission. This secondary product has not been verified by these sources.

Miles

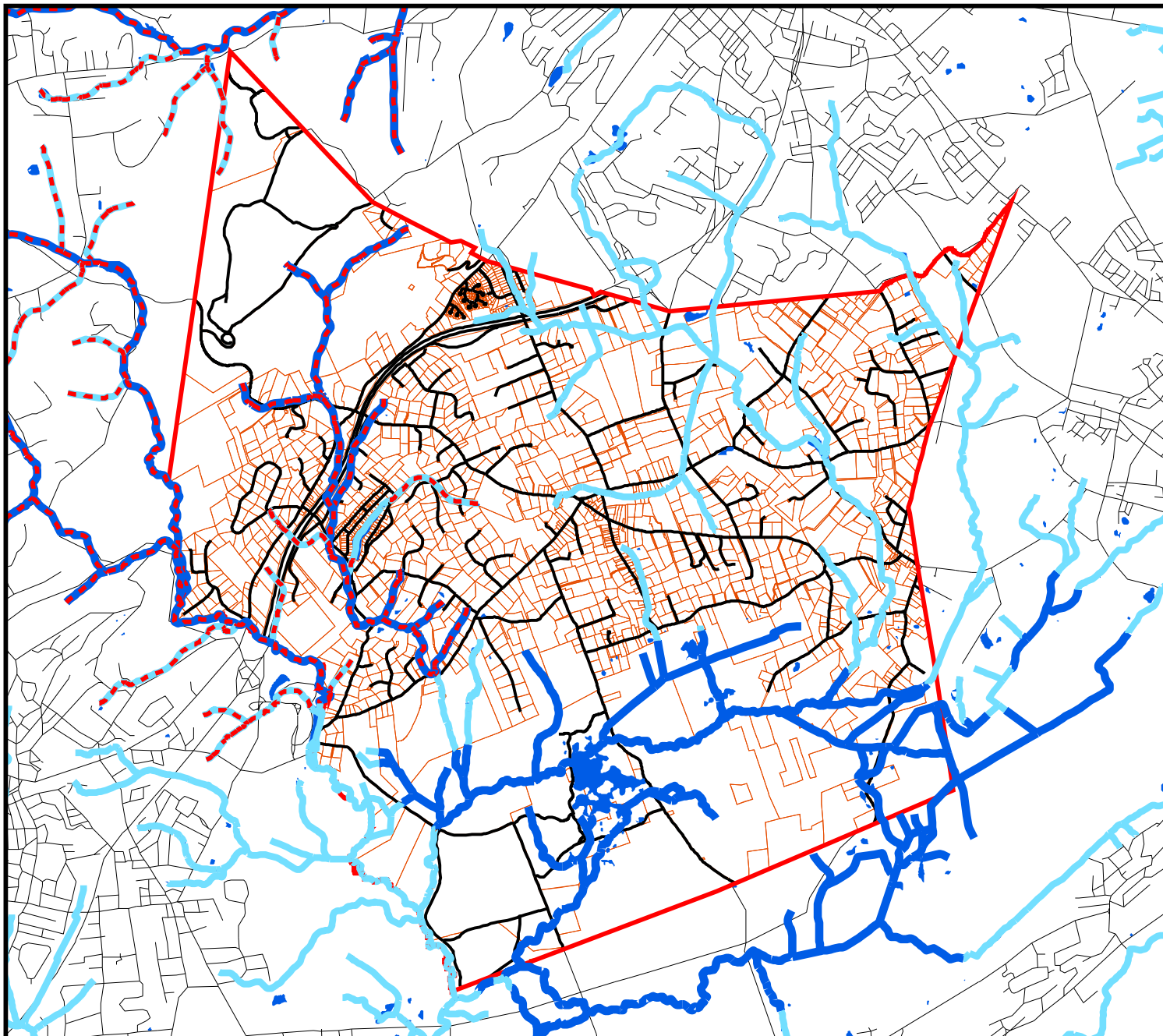
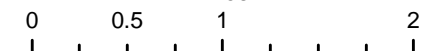


Figure 13 Nitrate Dilution-based Carrying Capacity Analysis

Harding Township Master Plan
September 2004

Legend

- Zone A (3.5 acres/system)
- Zone B (4.2 acres/system)
- Hydric Soils
- Municipal Boundary
- Parcels
- Water
- Roads

Zone outlines from Maser Consulting
"Nitrate Based Carrying Capacity
Assessment" dated 18 March 2004

This map was developed using geographic information system digital data developed under the auspices of the Department of Environmental Protection Geographic Information System including NJDEP data as well as data developed by Morris County Department of Planning and Development and Harding Township Environmental Commission. This secondary product has not been verified by these sources.

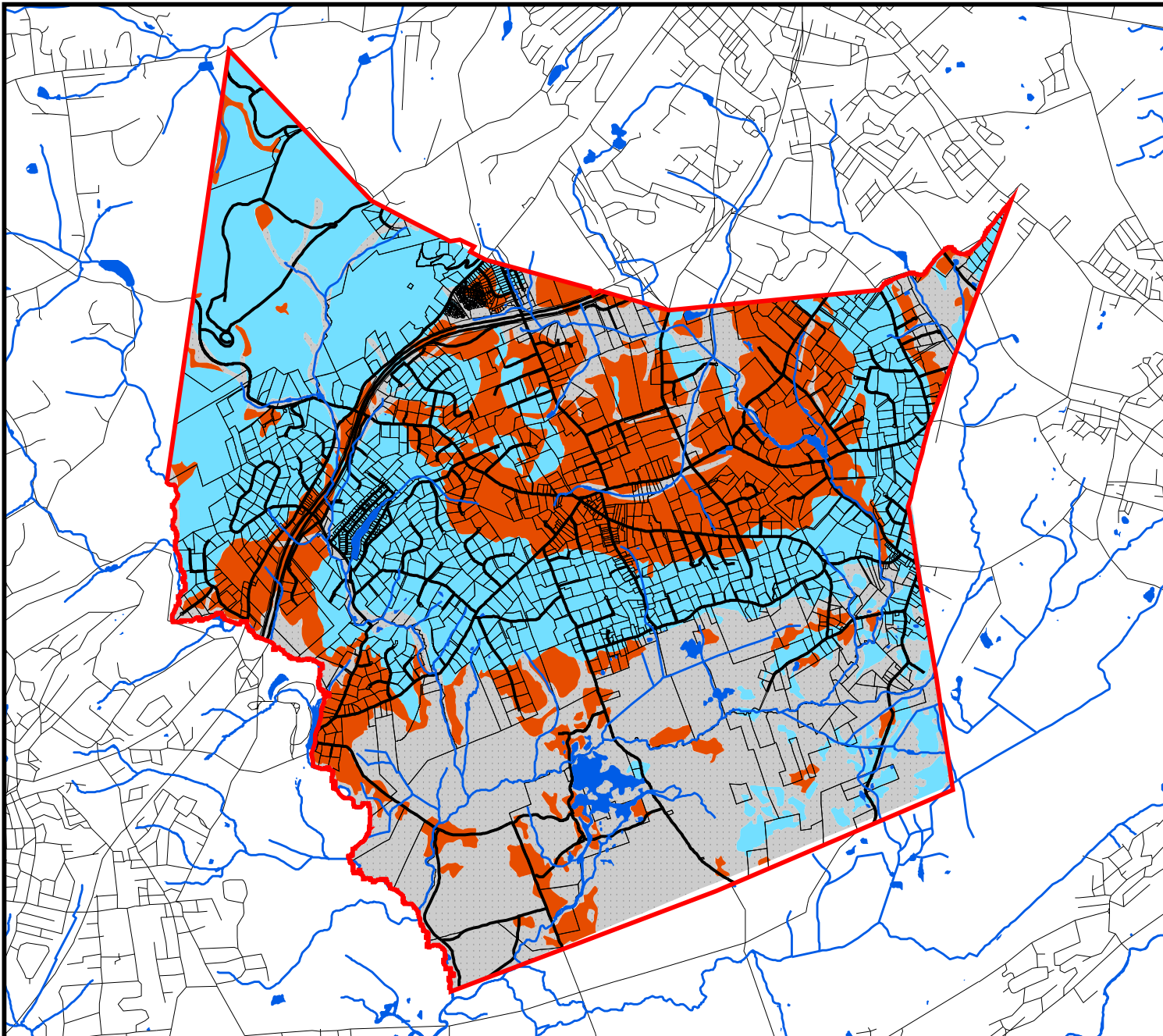
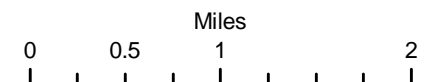


Figure 14 Open Space

Harding Township Master Plan
March 2008

Legend

- Public Preserved
- Private Preserved
- Farmland Assessed
- Vacant Land
- Developed Land
- Conservation Easement
- Farmland Preservation Easement
- Bridle Path Easement
- Municipal Boundary
- Roads
- Water
- Other Township-owned land



This map was developed using geographic information system digital data developed by the Department of Environmental Protection Geographic Information System including NJDEP data as well as data developed by Morris County Department of Planning and Development and Board of Taxation. Data has been updated by Harding Township using Land Use information from Boards and Commissions. Data includes changes up through November, 2007.

Miles

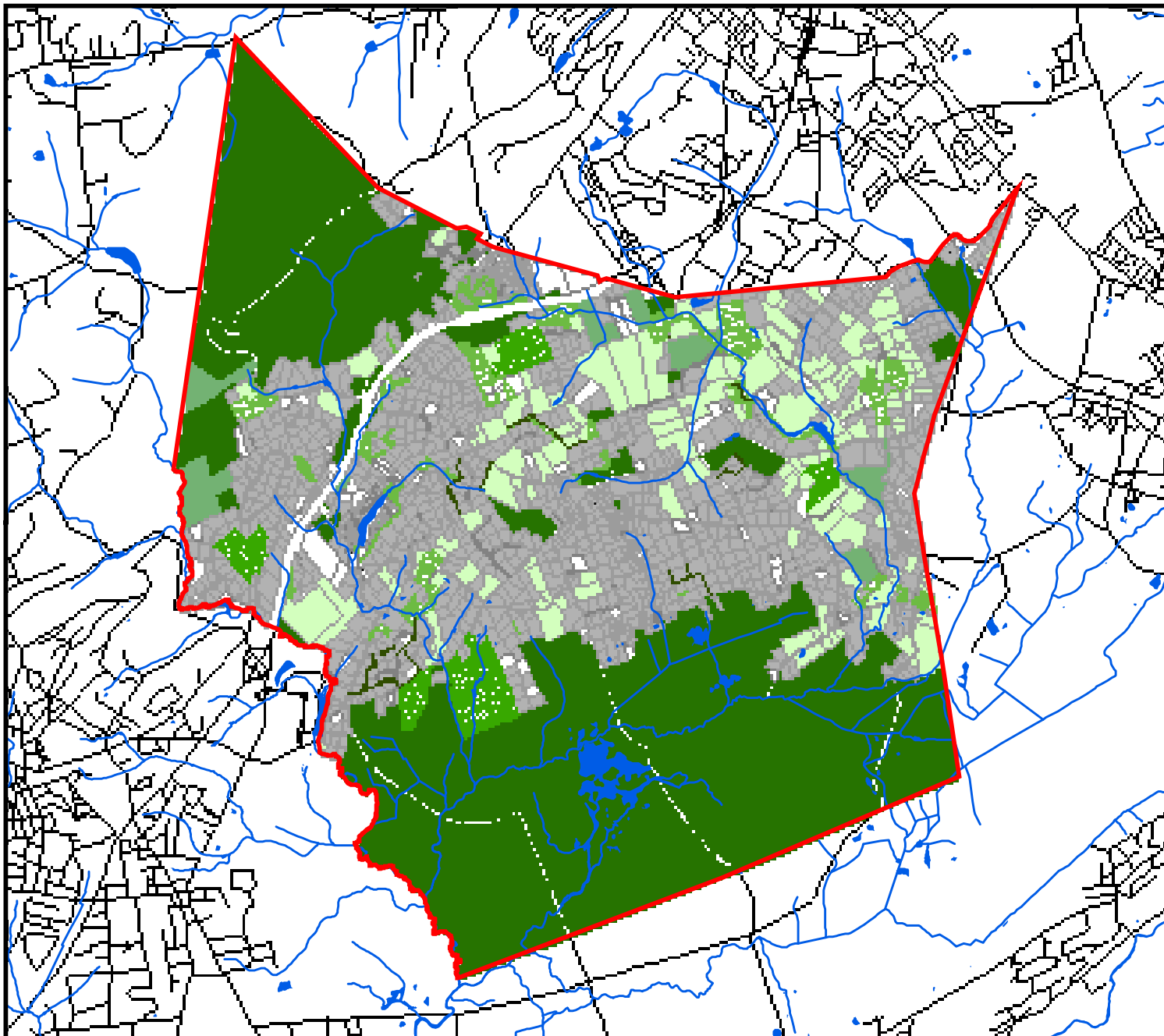
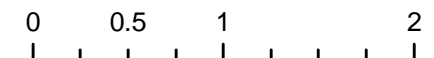
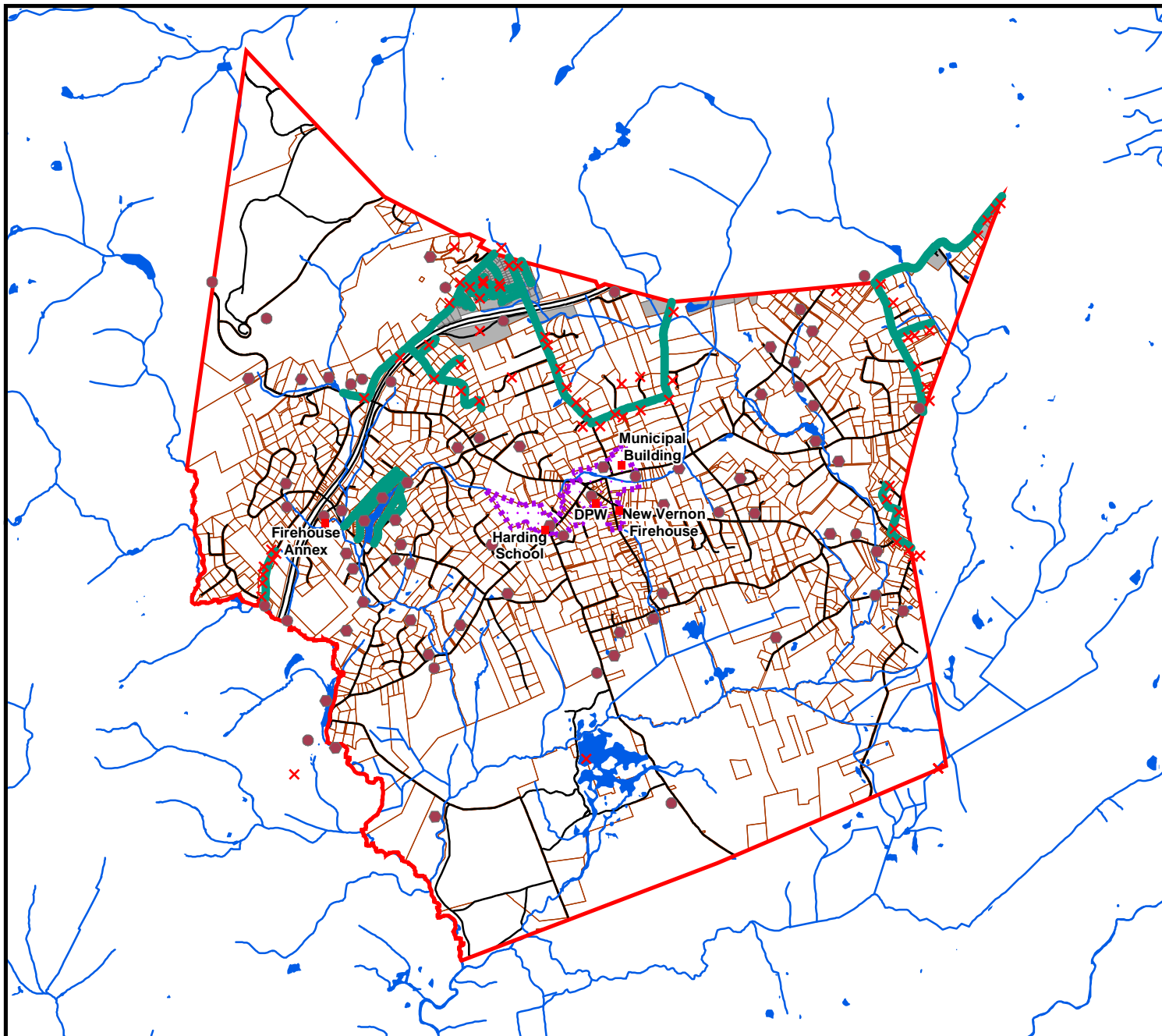


Figure 15 Community Facilities

Harding Township Master Plan
November 2008



Legend

- Community Facilities
- Water Lines
- Sewer Service Area
- × Fire Hydrants
- Fire Water Sources
- - - New Vernon Village
- Municipal Boundary
- Water Bodies

See Figure 14 for parks and open space



This map was developed using geographic information system digital data developed by the Department of Environmental Protection Geographic Information System including NJDEP data as well as data developed by Morris County Department of Planning and Development and Board of Taxation. Data has been updated by Harding Township using Land Use information from Boards and Commissions, the New Vernon Volunteer Fire Company, Harding Township Health Department, and water companies serving Harding Township. Hydrant and water source locations are schematic only. Data includes changes up through September, 2008.

Miles

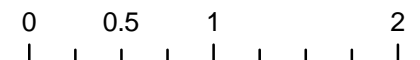
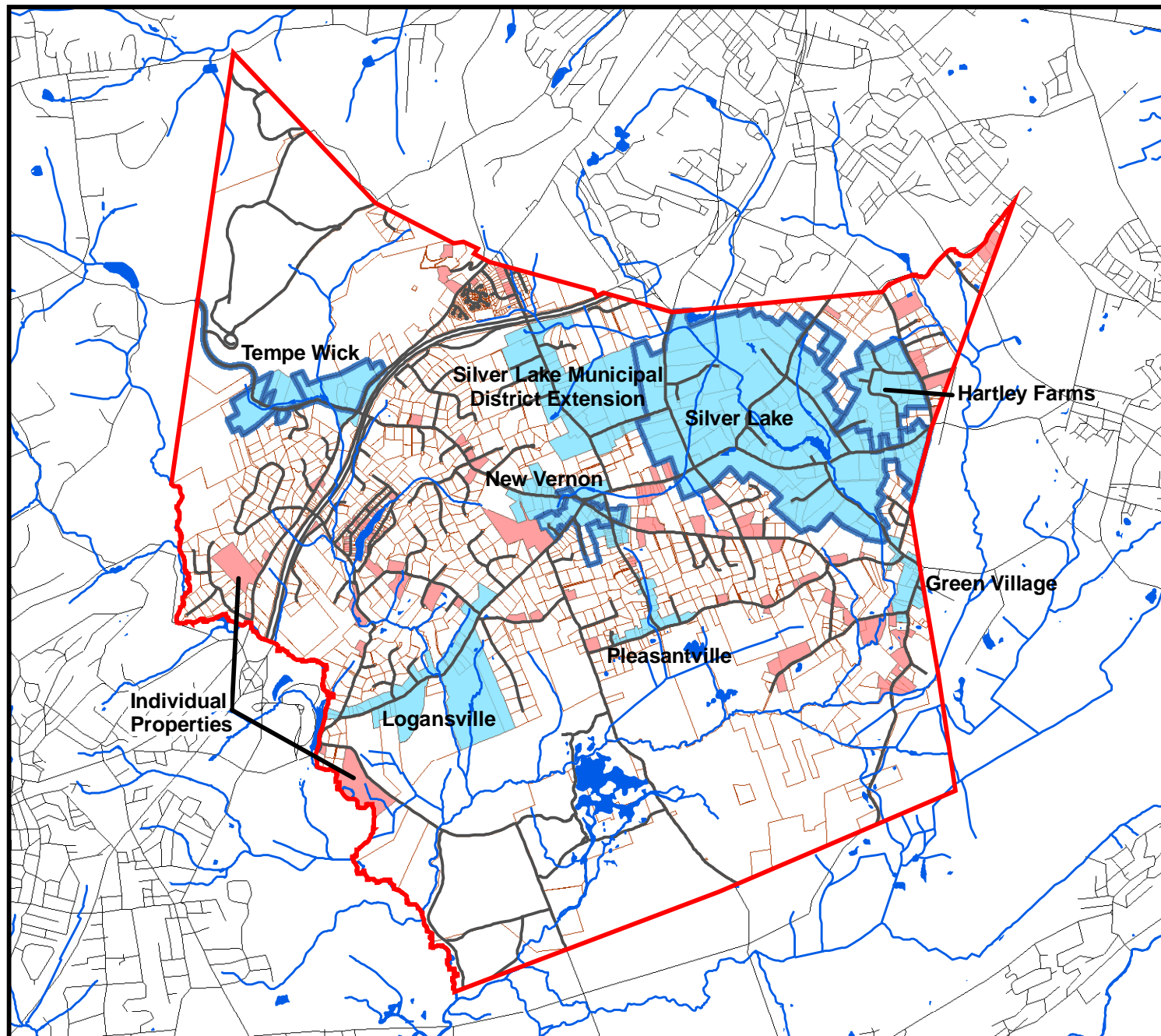


Figure 16 Historic Districts

Harding Township Master Plan
February 2005



Legend

Municipal Boundary

— Water

— Roads

District Type

Individual Properties

Municipal District

State & National District

Parcels

See Master Plan Appendix for
detailed Historic District maps
and list of Individual PO properties

This map was developed using geographic information system digital data developed under the auspices of the Department of Environmental Protection Geographic Information System including NJDEP data as well as data developed by Morris County Department of Planning and Development and Harding Township Historic Preservation Commission, including the the McCabe Survey. This secondary product has not been verified by these sources.

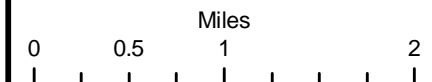


Figure 17 Existing Land Use

Harding Township Master Plan
September 2004
Corrected: February 2005

Legend

- Public / Quasi-public
- Farmland Assessed
- Farmland Assessed (w/ residence)
- Single-Family Residential
- Commercial
- Vacant
- Municipal Boundary
- Roads
- Water

"Public/Quasi-public" includes parks, privately preserved land and community facilities.

This map was developed using geographic information system digital data developed under the auspices of the Department of Environmental Protection Geographic Information System including NJDEP data as well as data developed by Morris County Department of Planning and Development and Board of Taxation. This secondary product has not been verified by these sources.

Miles

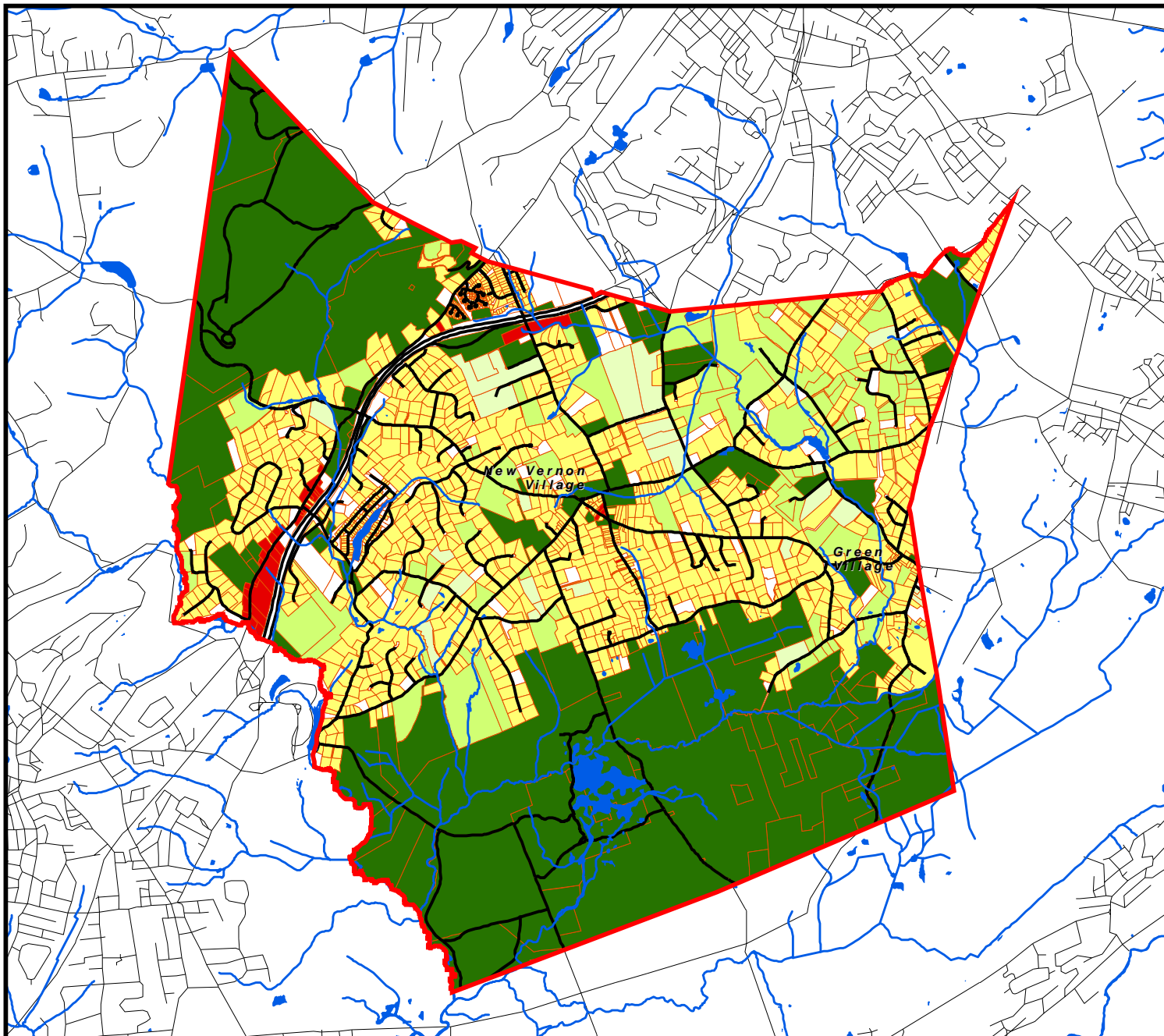
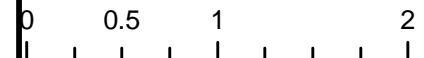


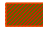






Figure 18 Established Lot Patterns in Low-Density Residential Areas

Harding Township Master Plan
September 2004

Legend

Average Lot Size: 5.2 acres

-  Lots less than 5 acres
-  Lots between 5 and 10 acres
-  Lots greater than 10 acres
-  Municipal Boundary
-  Other parcels
-  Water
-  Roads

Split-zoned lots are shown
in their entirety.

This map was developed using geographic information system digital data developed under the auspices of the Department of Environmental Protection Geographic Information System including NJDEP data as well as data developed by Morris County Department of Planning and Development and Board of Taxation. This secondary product has not been verified by these sources.

Miles

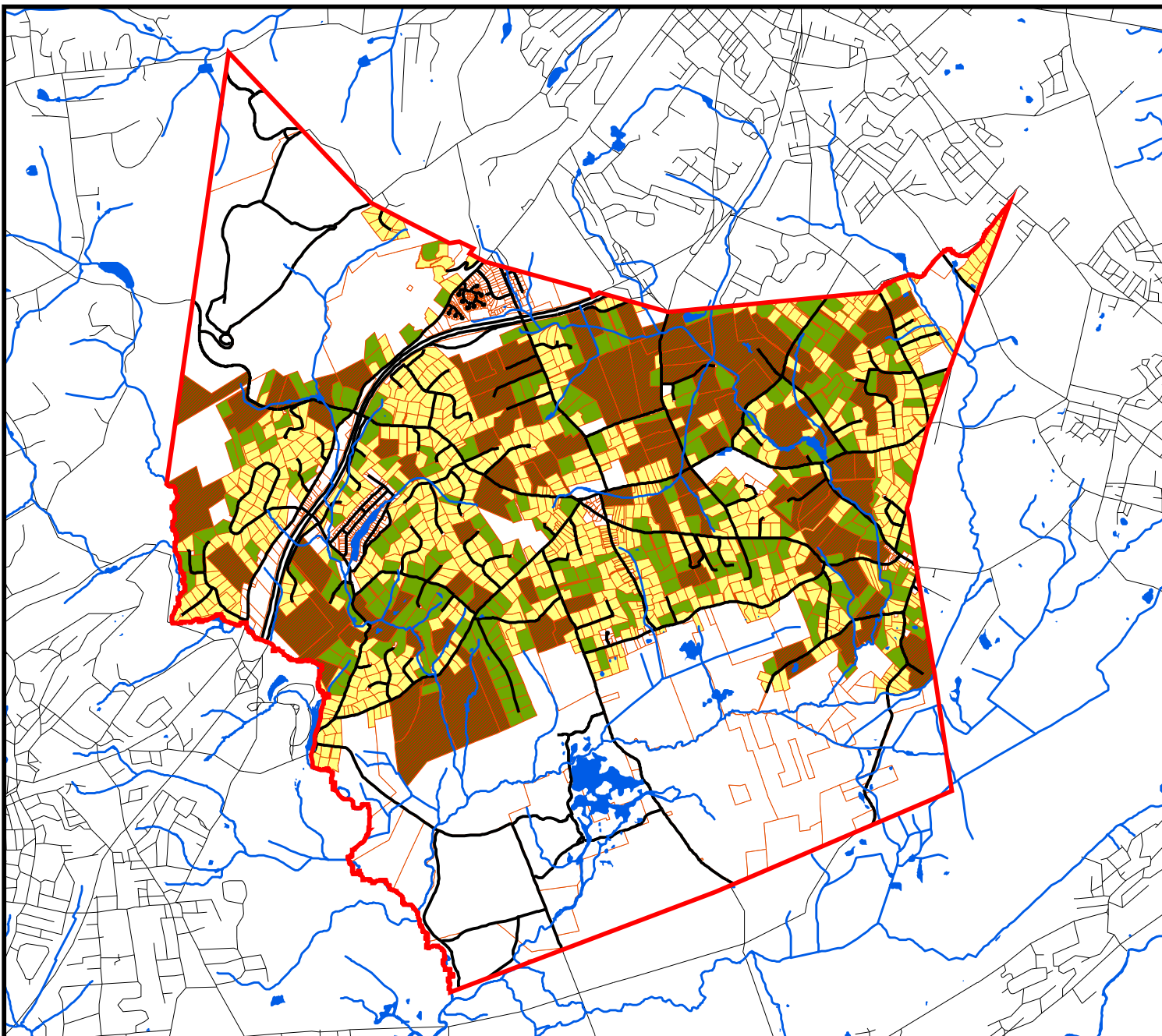
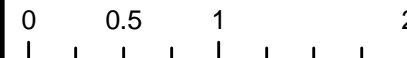


Figure 19 Future Land Use Plan

Harding Township Master Plan
September 2004

Legend

-  RR Rural Residential
-  R-1 Residence
-  R-2 Residence
-  R-3 Residence
-  R-4 Residence
-  AH Affordable Housing
-  PRN-RC Planned Res. Cluster
-  B-1 Historic Village Business Zone
-  B-2 Business
-  OB Office Building
-  PL Public Land
-  Municipal_Boundary
-  Parcels
-  Water
-  Roads

This map was developed using geographic information system digital data developed under the auspices of the Department of Environmental Protection Geographic Information System including NJDEP data as well as data developed by Morris County Department of Planning and Development and Harding Township Land Use Boards. This secondary product has not been verified by these sources. Corrected in accordance with Ordinance 18-06 in August 2006.

