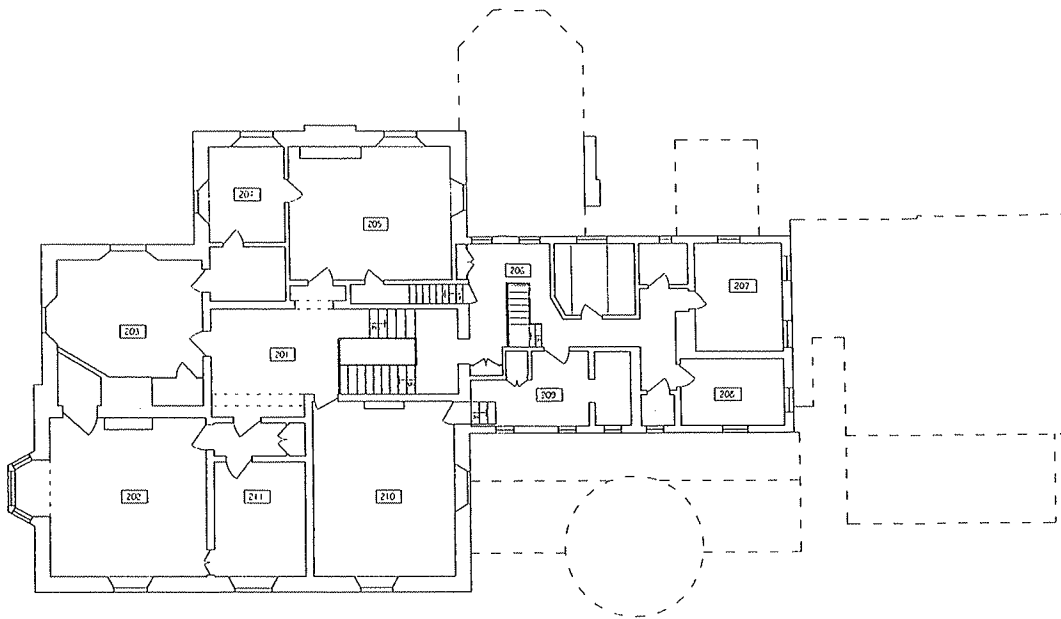


FIRST FLOOR PLAN
 SCALE: 3/32" = 1'-0"



FEASIBILITY STUDY
 GLEN ALPIN HOUSE
 HARDING TOWNSHIP, NEW JERSEY
 Watson & Henry Associates
 Architecture and Engineering
 Project Number: 04020
 Drawn By: CVR


SK 1



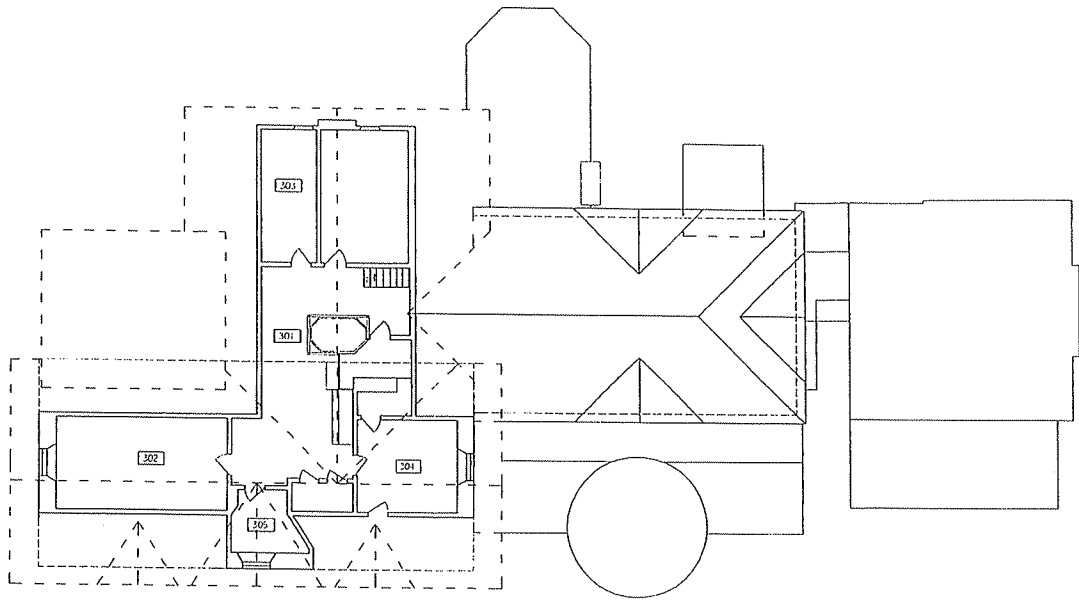
SECOND FLOOR PLAN

SCALE: 3/32" = 1'-0"



| | | |
|---|--|------------------------------------|
| FEASIBILITY STUDY GLEN ALPIN HOUSE HARDING TOWNSHIP, NEW JERSEY | | Project Number: 04020 Drawn By: |
|  Watson & Henry Associates Architecture and Engineering | | |


SK 2

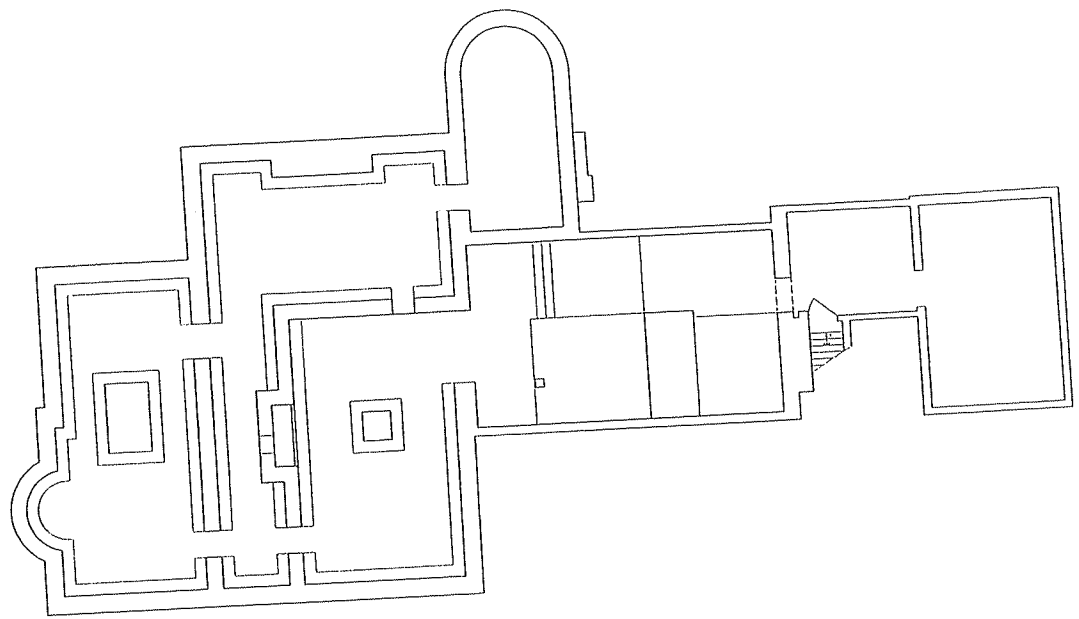


THIRD FLOOR PLAN

SCALE: 3/32" = 1'-0"



| | | | |
|---|--|------------------------------------|------|
| FEASIBILITY STUDY GLEN ALPIN HOUSE HARDING TOWNSHIP, NEW JERSEY | | Project Number: 04020 Drawn By: | SK 3 |
|  Watson & Henry Associates Architecture and Engineering | | | |



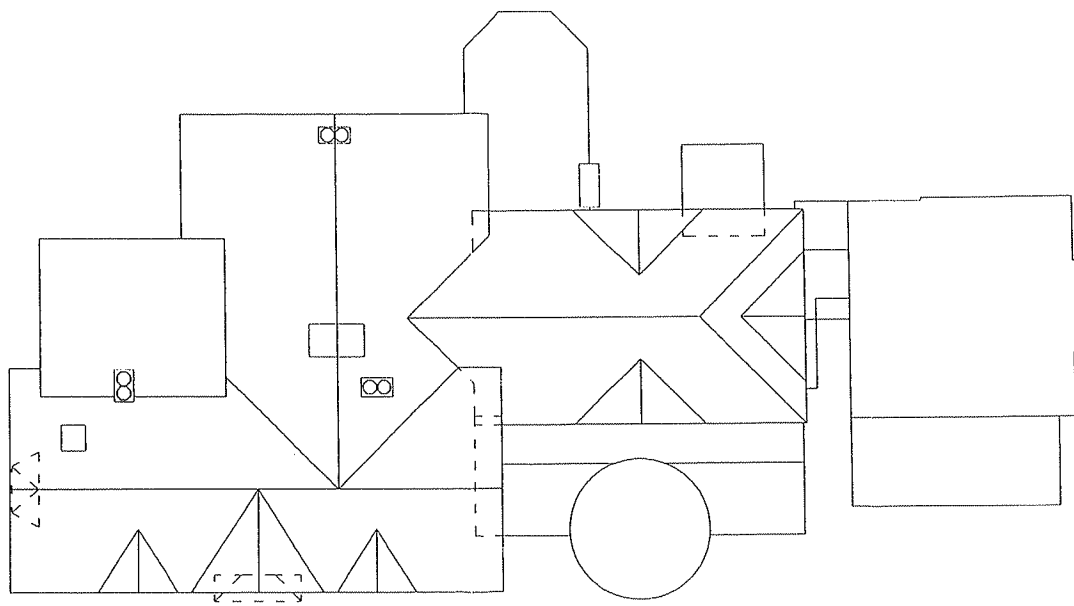
BASEMENT PLAN

SCALE: 3/32" = 1'-0"



FEASIBILITY STUDY
GLEN ALPIN HOUSE
HARDING TOWNSHIP, NEW JERSEY
Project Number: ...04020
Drawn By:
Watson & Henry Associates
Architecture and Engineering

SK 4



ROOF PLAN

SCALE: 3/32" = 1'-0"



| | | |
|---|--|------|
| FEASIBILITY STUDY GLEN ALPIN HOUSE HARDING TOWNSHIP, NEW JERSEY | | SK 5 |
| Watson & Henry Associates Architecture and Engineering | Project Number: 04020 Drawn By: | |